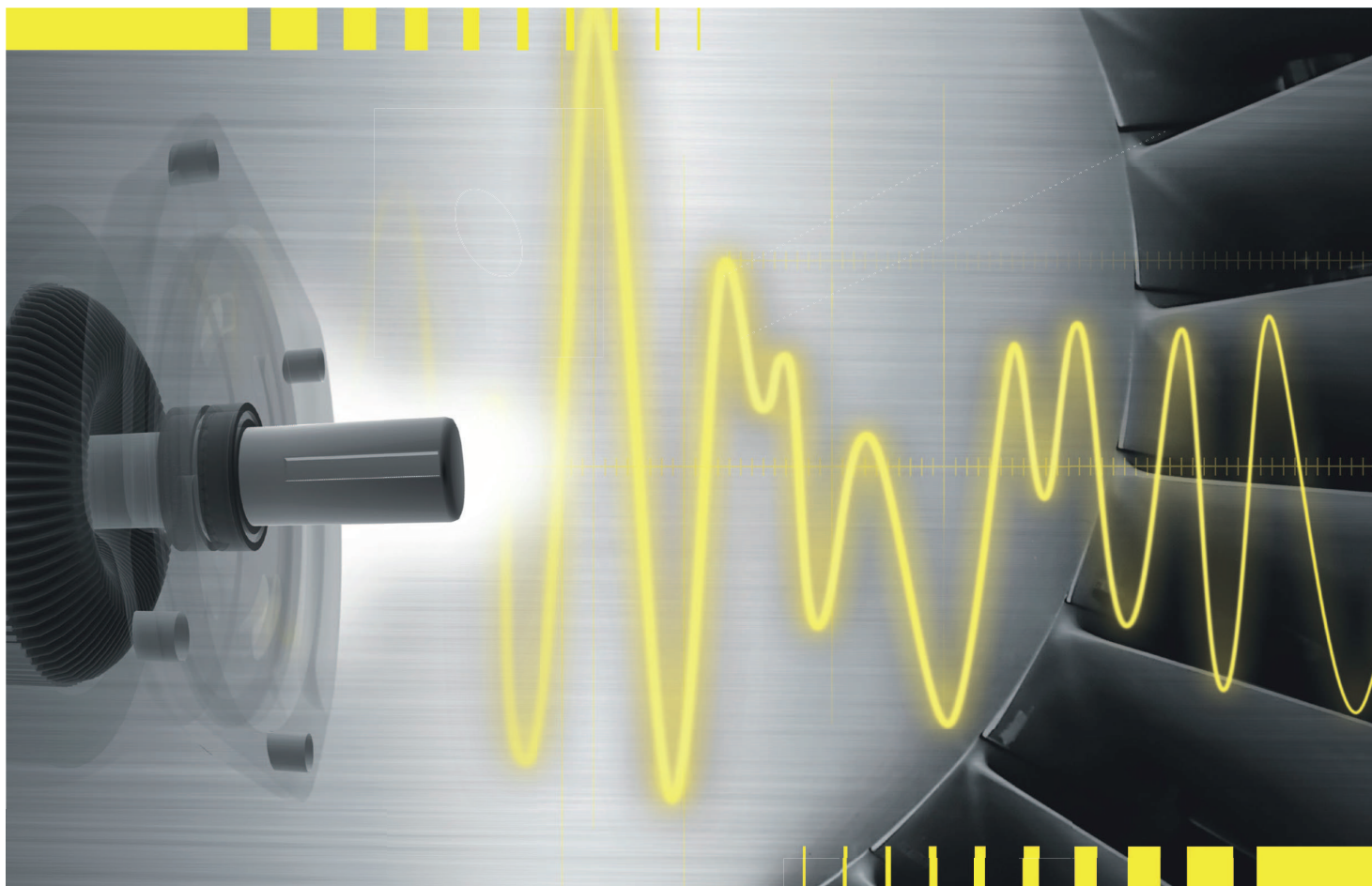


ATB TAMEL PRODUCT RANGE



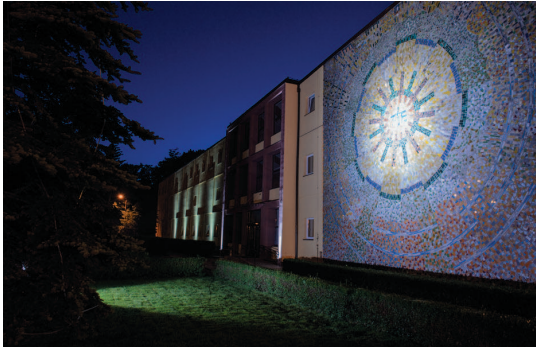
Tamel S.A.

ATB TAMEL

After 65 years of presence on the market and with strong Brook Crompton product brand we are one of Europe's leading suppliers of electric motors. With extensive staff base, modern machinery and supported by factories from our international ATB Group, we are ready to cover all your demands for electric drives.

WE OFFER:

- Low voltage AC motors up to 1100V
(need more, no problem – we can get you MV & HV motors, as well as DC motors from other ATB factories)
- Aluminium and cast iron frame
(light and economic design / massive, durable construction – all available)
- Safe and hazardous area Exd/de, ExNa, Exe, Exd I M2
(wide range of variants: IIA,IIB,IIC / T3,T4,T5)
- Energy efficient product
(IE2,IE3, IE4 class, Nema Premium, MEPS)
- Single and three phase motors
- Variable speed motors
(designed for or fitted with frequency inverter)
- Special design and application
(smoke extraction motors, cranes, wood saws, marine motors... ask what you need)
- Aluminium and cast iron foundry
(need cast parts, components – just send us an inquiry)
- Professional test room and laboratory
(witnessed routine and special tests available, third-party certification, etc.)



SAFE AREA MOTORS

- IEC Frames 63-180 (aluminium housing), 80-355 (cast-iron housing)
- Efficiency class: IE2, IE3, IE4, Nema Premium, MEPS
- Speed/power range: 2-8 poles / 0.18 – 400kW (2-speed and other on request)
- Voltage: up to 750V
- Multi-mount construction (B3, B5, B14, B30 and other)
- IEC and Nema standards
- Certification available: UL/CSA, MEPS, GOST, ARAMCO, BV
- Degree of protection: IP55, IP56, IP65, IP66, IP67, IP68
- Ambient temperature -55 / +100°C (depending on frame material)
- Cooling: IC411, IC418, IC416, IC410



SAFE AREA ALUMINIUM MOTOR



SAFE AREA CAST IRON MOTOR

ATB TAMEL PRODUCT RANGE

HAZARDOUS AREA MOTORS

FLAMEPROOF EXD/DE

- Exd, zone 1, group IIA&IIB, temp. class T3, T4, T5 (e.g. Ex II 2G Ex d IIB T4 Gb)
- Exde zone 1, group IIA&B, IIC, temp. class T3, T4 (e.g. Ex II 2G Ex de IIC T3 Gb)
- mining motors Ex I M2 Ex d I Mb
- Frame size 90-315
- Speed/power range: 2-8 poles / 0,18 – 200kW
- Voltage: up to 1100V
- Mounting options (B3, B5, B14, B30 and other)
- IEC standards
- ATEX / IECEX certification
- Degree of protection: IP55, IP56, IP65, IP66, IP68
- Ambient temperature -55 / +60°C



INCREASED SAFETY EXE

- zone 1, group II, temp. class T3
- Frame size 80-355 Speed/power range: 2-8 poles / 0,37 – 260kW
- Voltage: up to 750V
- Multi-mount construction (B3, B5, B14, B30 and other)
- IEC standards
- ATEX certification
- Degree of protection: IP55, IP56, IP65, IP66



NON-SPARKING EXNA

- Zone 2, group II, temp. class T3
- Frame size 80-355
- Speed/power range: 2-8 poles / 0,18 – 400kW
- Voltage: up to 750V
- Multi-mount construction (B3, B5, B14, B30 and other)
- IEC standards
- ATEX / IECEX certification
- Degree of protection: IP55, IP56, IP65, IP66
- Ambient temperature -55 / +60°C



SPECIAL DESIGN MOTORS

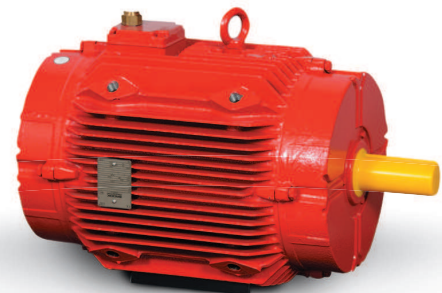
VARIABLE SPEED MOTORS

- IEC Frames 63-132 (aluminium housing), 80-132 (cast-iron housing)
- Speed/power range: 2-4 poles / 0.18 – 7,5kW
- Constant & variable torque
- Multi-mount construction (B3, B5, B14, B30 and other)
- Degree of protection: IP55, IP56, IP65, IP66



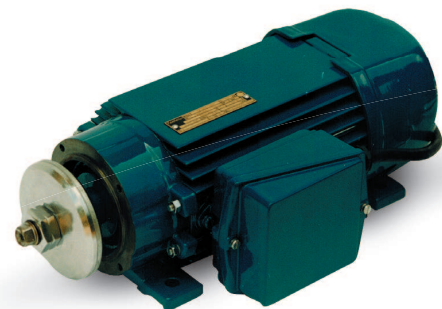
SMOKE EXTRACTION DUTY MOTORS - FUMEX®

- IEC Frames 80-355 (cast-iron housing)
- Speed/power range: 2-8 poles / 0.18 – 400kW
- Multi-mount construction (B3, B5, B14, B30 and other)
- Degree of protection: IP55, IP56, IP65, IP66
- Temperature class: F200, F250, F300, F400
- Certified to EN 12101-3:2002 standard



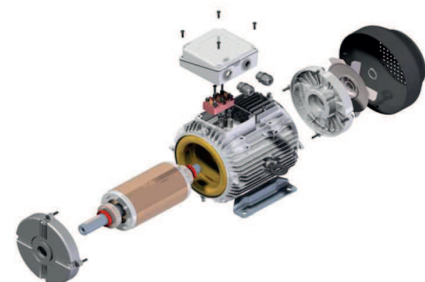
WOODWORKING MACHINES / CIRCULAR SAW MOTORS

- IEC Frames 63-75 aluminium housing
- Speed/power range: 2 poles / 1.0 – 6.5kW / S6-40% duty
- Voltage: up to 690V
- Mounting options B3-foot mounted
- IEC standard
- Degree of protection: IP55, IP56
- Ambient temperature -20 / +40°C (depending on frame material)
- Cooling: IC411



CUSTOMIZED DESIGNS

- Brake motors - AC & DC brakes
- Forced ventilated motors IC416
- Marine motors (to LRS, BV, ABS, DNV, RINA, NKK and other)
- Single phase motors: 2-4 poles, up to 1,1kW
- Motors to be built on (stator and rotor units)
- Motors fitted with accessories: encoders, glands, thermal sensors, etc.



ATB TAMEL PRODUCT RANGE

SIZE 80-180 ALUMINIUM & CAST IRON FRAMES IE3 MOTORS AVAILABLE



Power at 50Hz [kW]	2 pole	4 pole	6 pole
0,75	WP-DA(F)80MM IE3	-	-
1,1	WP-DA(F)80MS IE3	WP-DA(F)90STX IE3	-
1,5	WP-DA(F)90SMX IE3	WP-DA(F)90LWX IE3	WP-DA(F)100LRF IE3
2,2	WP-DA(F)90LSX IE3	WP-DA(F)100LRF IE3	WP-DA(F)112MWX IE3
3	WP-DA(F)100LMF IE3	WP-DA(F)100LTF IE3	WP-DA(F)132MMX IE3
4	WP-DA(F)112MR IE3	WP-DA(F)112MWX IE3	WP-DA(F)132STX IE3
5,5	WP-DA(F)132SGX IE3	WP-DA(F)132STX IE3	WP-DA(F)132MVX IE3
7,5	WP-DA(F)132SMX IE3	WP-DA(F)132MVX IE3	WP-DA(F)160MM IE3
11	WP-DA(F)160MJ IE3	WP-DA(F)160MR IE3	WP-DA(F)160LV IE3
15	WP-DA(F)160LR IE3	WP-DA(F)160LU IE3	WP-DA(F)180LR IE3
18,5	WP-DA(F)160LT IE3	WP-DA(F)180ME IE3	-
22	WP-DA(F)180MF IE3	WP-DA(F)180LM IE3	-

SIZE 200-355 CAST IRON FRAMES IE3 MOTORS AVAILABLE



Power at 50Hz [kW]	2 pole	4 pole	6 pole
30	WP-UDF200LNX IE3	WP-UDF200LNX IE3	WP-UDF225MN IE3
37	WP-UDF200LNX IE3	WP-UDF225SR IE3	WP-UDF250MNE IE3
45	WP-UDF225MP IE3	WP-UDF225MN IE3	WP-UDF280SNE IE3
55	WP-UDF250MNE IE3	WP-UDF250MPE IE3	WP-UDF280MNE IE3
75	WP-UDF280SNE IE3	WP-UDF280SNE IE3	WP-UDF315SNE IE3
90	WP-UDF280MNE IE3	WP-UDF280MNE IE3	WP-UDF315MNE IE3
110	WP-UDF315SNE IE3	WP-UDF315SNE IE3	WP-UDF315MN IE3
132	WP-UDF315MNE IE3	WP-UDF315MNE IE3	WP-UDF315LN IE3
150	WP-UDF315MN IE3	WP-UDF315MN IE3	WP-UDF355SG IE3
160	WP-UDF315MP IE3	WP-UDF315MP IE3	WP-UDF355SG IE3
185	WP-UDF315LN IE3	WP-UDF315LN IE3	WP-UDF355SJ IE3
200	WP-UDF315LP IE3	WP-UDF315LN IE3	WP-UDF355SP IE3
225	WP-UDF355SG IE3	WP-UDF355SG IE3	WP-UDF355MN IE3
250	WP-UDF355SJ IE3	WP-UDF355SJ IE3	WP-UDF355MN IE3
280	WP-UDF355SN IE3	WP-UDF355SN IE3	WP-UDF355LJ IE3
315	WP-UDF355MJ IE3	WP-UDF355MJ IE3	WP-UDF355LN IE3
355	WP-UDF355MN IE3	WP-UDF355MN IE3	-
375	WP-UDF355LN IE3	WP-UDF355LN IE3	-

IE4 EFFICIENCY MOTORS AVAILABLE



Power at 50Hz [kW]	2 pole	4 pole	6 pole
30	WSP-UDF200LRF IE4	-	-
37	WSP-UDF200LVF IE4	WSP-UDF225SPF IE4	-
45	WSP-UDF225MNF IE4	WSP-UDF225MRF IE4	-
55	WSP-UDF250MRE IE4	WSP-UDF250MN IE4	-
75	WSP-UDF280SRE IE4	WSP-UDF280SP IE4	-
90	WSP-UDF280MVE IE4	WSP-UDF280MN IE4	-
110	WSP-UDF315SNE IE4	WSP-UDF315SJ IE4	-
132	WSP-UDF315MN IE4	WSP-UDF315MN IE4	-
150	-	WSP-UDF315MP IE4	-
160	WSP-UDF315MR IE4	WSP-UDF315MR IE4	-
185	WSP-UDF315LR IE4	WSP-UDF315LP IE4	-
200	WSP-UDF315LR IE4	WSP-UDF315LR IE4	-
225	WSP-UD355SN IE4	WSP-UDF355SJ IE4	-
250	WSP-UDF355MJ IE4	WSP-UDF355SN IE4	-
280	WSP-UDF355MN IE4	WSP-UDF355SN IE4	-
315	WSP-UDF355MR IE4	WSP-UDF355MJ IE4	-
355	WSP-UDF355LN IE4	-	-
375	WSP-UDF355LR IE4	-	-

NEW PAINTING SYSTEM AVAILABLE NORSOK STANDARD FOR HIGHLY-CORROSIVE ENVIRONMENT

The NORSOK standards are a series of standards developed by the Norwegian petroleum industry. The purpose of these industry standards is to replace the individual oil company specifications and to add value, reduce cost and lead time and to remove unnecessary activities in the offshore field developments and operation.

NORSOK standard gives the requirements for the selection of coating materials, surface preparation, application procedures and inspection for protective coatings to be applied during the construction and installation of offshore installations and associated facilities.

The aim of this NORSOK standard is to obtain a coating system, which ensures:

- optimal protection of the installation with a minimum need for maintenance
- that the coating system is maintenance friendly
- that the coating system is application friendly
- that health, safety and environmental impacts are evaluated and documented.

NORSOK PAINTING IN ATB TAMEL

Among many different NORSOK systems, our factory offers two:

- **NORSOK M-501 SYSTEM NO. 1** - For carbon steel operating below 120°C.

This covers structural steel, exteriors of equipment, vessels, piping and valves (un-insulated)

- **NORSOK M-501 SYSTEM 2B** - For carbon steel operating above 120 °C.

This covers insulated surfaces, vessels, piping, flare and crane booms.

System 2B consist of 100 µm thermally sprayed zinc or alloys of zinc - top coated with a coating system.

System 2B is mainly an alternative to system 1.

Main characteristics of NORSOK M-501 painting system:

- Surface preparation: grit blasting to SA 2.5
- Protective coating: zinc rich coat above 80µm
- extensive primer coat 200µm
- top coat 80µm Agate grey RAL 7038 (or other required color)
- Total dry film thickness 360µm
- Whole coating process under FROSIO Inspector supervision



ATB TAMEL PRODUCT RANGE

CHECK WHAT'S NEW!

Wide range of Nema Premium
UL/CSA motors according
to latest North American standards



IE4 efficiency class motors available



NORSOK M-501 coating system no.1
and system 2B available



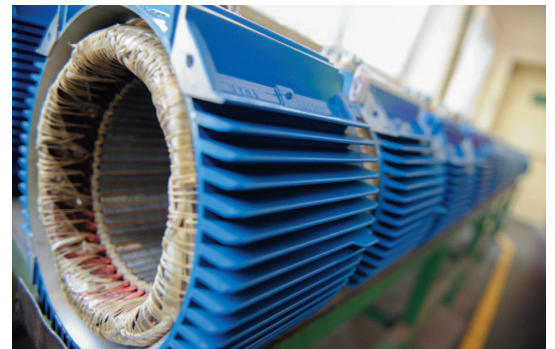
Latest EX products certification
for Russian market (former RTN)



China Energy Label



New range of low-cost, economic design motors size 200-355



CONTACT DETAILS

ATB TAMEL Spolka Akcyjna
Ul. Elektryczna 6
33-100 Tarnow
Poland
www.tamel.pl

OFFICE
phone: +48 14 632 11 00
fax: +48 14 632 11 02
mail: office.tamel@tamel.pl

SALES
Domestic: +48 14 632 1453
Export: +48 14 632 1601,
+48 14 632 1643
Inquiries: inquiry@tamel.pl,
zapytanie@tamel.pl

CUSTOMER SERVICE
Domestic: +48 14 632 1531
Export: +48 14 632 1602,
+48 14 632 1455
mail: csc@tamel.pl

